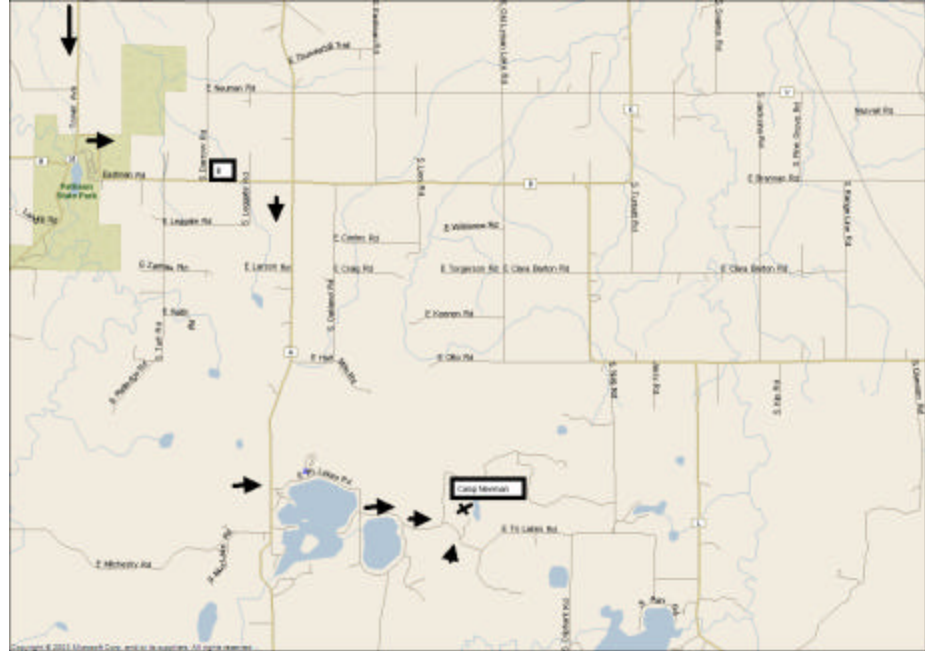


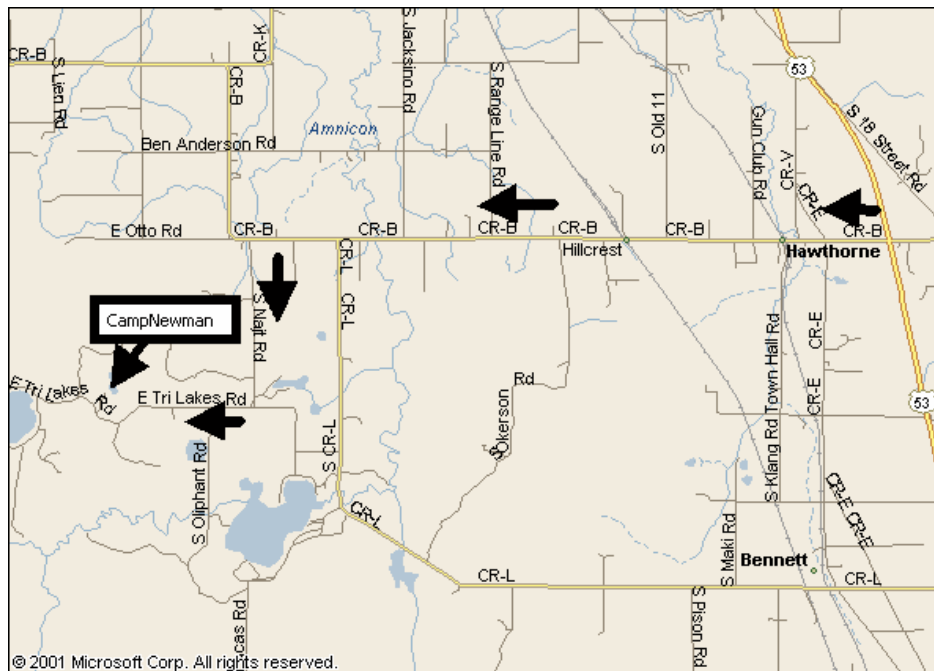
# How to get to Camp Newman

## From the West

Follow WI HWY 35 south out of Superior toward Pattison Park (12.8 mi from 21st and Tower), Turn left on County Hwy B and follow it to County Hwy A (3 miles to the stop sign). Turn right on County Hwy A and follow it 3.5 to the Tri Lakes Road and take a left (between two taverns). Follow the East Tri Lakes Road 1.9 around the lakes. Follow the road until it turns into gravel going left as the pavement goes to the right. Keep left and go about 8 tenths of a mile to the Camp Newman gate that is on the left.



# Camp Newman Fire # is 5301



## From the East

Follow WI Hwy 53 to Douglas County Road B go west on County B 7.4 miles to the South Najt Road. Turn Left and follow the road 1.9 miles to the fork. Keep to the right at the fork go to the stop sign. Turn right at the stop sign (unto the East Tri Lakes Road) follow the road 1.9 miles to entrance and gate for Camp Newman (On your right).